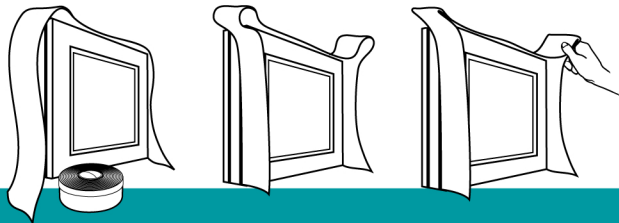


Folienband DUO Easy+ 240 • DUO Easy+ 180 • FI Easy+ • FA Easy+

Flashing Tape DUO Easy+ 240 •
DUO Easy+ 180 • FI Easy+ • FA Easy+
for inner and the outer window connection joints

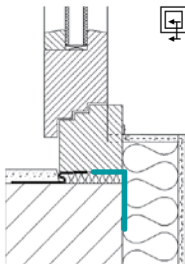


Outside installation with DUO Easy+ 240, DUO Easy+ 180, FA Easy+

Cut the flashing tape to length for outside. Remove the cover strip of the transfer adhesive, then attach the tape to the exposed side of the outer part of the window frame or, before installation, concealed to the outer part of the window frame. Install the tape to the building structure with the full face of the tape. A primer is recommended for the products DUO Easy+ 180 and FA Easy+ on highly absorbent substrates.

Observe the following sequence of steps:

1. bottom side horizontally
2. vertically
3. top side horizontally



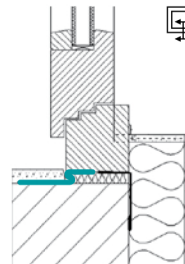
Inside installation with DUO Easy+ 240, DUO Easy+ 180, FI Easy+

Before installation: Flashing tape for inside. Self-adhesive tape for installation to window frames. Tape is attached to the walling by full-face self-adhesive layer.

Tips for installation: The surface to which the tape is installed should be dry and free of oil, grease and dust. Provide sufficient fabric reinforcement of the plaster in the window reveal. Reels that have been opened can be used again for the next job. Seal all four sides of the window. The tape towards the parapet is installed last. Ensure that the base is fairly level and does not have joints that would interrupt the air tightness plane. A primer is recommended for the products DUO Easy+ 180 and FI Easy+ on highly absorbent substrates.

Indoor installation: Roll out the tape along the three sides of the window you want to seal; cut the tape to length, allowing some 10 cm extra length. Pull off the film strip of the transfer adhesive and attach it concealed to the outer part of the window frame. Form a loop at each corner. Press the adhesive strips of the loops together to produce an air-tight joint. Install the outer window frame as usual. Fill the functional level with polyurethane foam. Now bend the tape 90 degrees, install it with a small loop, if possible, and attach the full-face self-adhesive layer to the walling.

Important: do not lay the tape from the window frame to the masonry in a steep slop as the applied plaster will otherwise be too thin and tear!



How to install the tape to walling:

All surfaces should be clean, dry and sufficiently load-bearing. Any dust, grease, oil and loose material should be removed. Some bases may require priming. Installation tests are recommended in such cases. The tape can be installed without problem on all common building materials (wood, concrete, sand-lime brick, ..). A primer is recommended for the products DUO Easy+ 180, FI Easy+ and FA Easy+ on highly absorbent substrates. The adhesive face of the tape should make full contact with the base (at least 75%, see Installation guide/TR 20, RAL, ift Rosenheim). This is ensured by the holehedral self-adhesive layer. A sufficient length of tape should be allowed for compensating movements (the basic provisions of DIN 4108 and 18540 should be observed for joint size definition and design to allow for the usual movements of structural components). Longitudinal joints should be installed with 5 cm overlap. Before applying the adhesive, ensure that the base is fairly level and does not have joints that would interrupt the air tightness plane. Skips can be repaired, e.g., with appropriate film adhesive.

Additional information is in the brochure "Verputzen von Fensteranschlussfolien", (Plastering of Window Connection Foils) issued by the German Federal Gypsum Plaster Association, Bundesverband der Gipsindustrie.