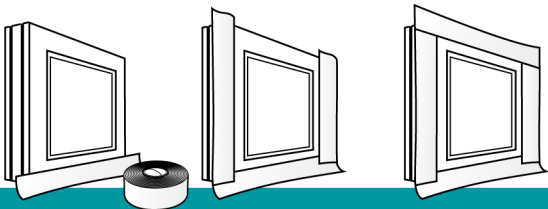


DUO Easy 240 • DUO Easy 180 • FI Easy • FA Easy

Flashing Tape DUO Easy 240 •
DUO Easy 180 • FI Easy • FA Easy
for inner and the outer window connection joints



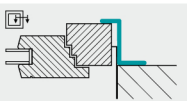
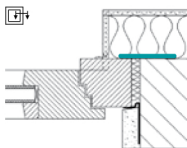
Outside installation with DUO Easy 240, DUO Easy 180, FA Easy

Outside installation: Cut the flashing tape to length for outside. Pull the covering layer off the transfer adhesive; then install the tape to the exposed face of the window frame. Install the full face of the self-adhesive layer to the building wall. A primer is recommended for the products DUO Easy 180 and FA Easy on highly absorbent substrates.

Observe the following sequence of steps:

1. bottom side horizontally
2. vertically
3. top side horizontally

Installation to double wall: When the tape is installed to curtain windows, it is possible to install the curtain windows first and then the flashing tape. When the tape is installed after the installation of facing elements, the corners of the tapes may have to be notched.



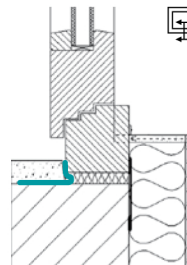
Inside installation with DUO Easy 240, DUO Easy 180, FI Easy

Before installation: Flashing tape for inside. One side with self-adhesive layer over the entire surface for connection to the window frame and the building structure.

Tips for installation: The surface to which the tape is installed should be dry and free of oil, grease and dust. Provide sufficient fabric reinforcement of the plaster in the window reveal. Reels that have been opened can be used again for the next job. Seal all four sides of the window. Ensure that the base is fairly level and does not have joints that would interrupt the air tightness plane. A primer is recommended for the products DUO Easy 180 and FI Easy on highly absorbent substrates.

Indoor installation: Pay out the flashing tape along the three sides of the window you want to seal: allow some 10 cm extra length. Pull off the film strip of the transfer adhesive and attach it to the outer part of the window frame. Allow 5-10 cm extra tape length at the corners and stick them together to produce an air-tight connection. Install the outer part of the window frame as usual. Fill the functional level with polyurethane foam. Then, with a small loop, install the full face of the self-adhesive layer to the walling.

Important: do not lay the tape from the window frame to the masonry in a steep slope as the applied plaster will otherwise be too thin and tear!



How to install the tape to walling:

All surfaces should be clean, dry and sufficiently load-bearing. Any dust, grease, oil and loose material should be removed. Some bases may require priming. Installation tests are recommended in such cases. The tape can be installed without problem on all common building materials (wood, concrete, sand-lime brick, ...). A primer is recommended for the products DUO Easy 180, FI Easy and FA Easy on highly absorbent substrates. The adhesive face of the tape should make full contact with the base (at least 75%, see Installation guide /TR 20, RAL, ift Rosenheim). This is ensured by the holehedral self-adhesive layer. A sufficient length of tape should be allowed for compensating movements (the basic provisions of DIN 4108 and 18540 should be observed for joint size definition and design to allow for the usual movements of structural components). Longitudinal joints should be installed with 5 cm overlap. Skips can be repaired, e.g., with appropriate film adhesive. Before applying the adhesive, ensure that the base is fairly level and does not have joints that would interrupt the air tightness plane.

Additional information is in the brochure "Verputzen von Fensteranschluss-folien", (Plastering of Window Connection Foils) issued by the German Federal Gypsum Plaster Association, Bundesverband der Gipsindustrie.